



# Safer Wolverhampton Partnership Annual Report 2017-2018



Operating as Wolverhampton's Local Police & Crime Board





## Contents

---

Introduction by Chair of the Safer Wolverhampton Partnership	3
The Safer Wolverhampton Partnership	4
How we commission	4
Community Safety and Harm Reduction Strategy 2017-2020	5
– Reducing Reoffending	6
– Reducing Victimisation	8
– Violence Prevention	12
– Statutory Functions	14
Glossary of Terms	18
Moving forward 2018-2019	20

## Appendices

---

A: Budget Allocation 2018-2019	21
B: SWP Board Membership & Delivery Structure Chart	22
C: Performance Report 2017-2018	23

## Introduction by Chair of the Safer Wolverhampton Partnership

We're pleased to present Safer Wolverhampton Partnership (SWP) annual report for 2017-2018. With the SWP Board appointing a new Chair in November 2017, it's provided the opportunity to take a fresh look at how we provide strong governance for delivery against our crime reduction and community safety priorities and how we problem solve together to meet presenting challenges.

Our performance this year highlights significant steps forward in some areas; our strengthened partnership approach to delivering our objectives, the increased confidence of reporting traditionally hidden crimes associated with violence against women and girls, modern slavery and hate crime are particularly encouraging.

It also pulls into focus the need for a targeted approach in tackling other volume crimes such as robbery and vehicle crimes and, how we address the growing prevalence of violence and weapon-related

offending moving forward. Whilst not out of kilter with the national or regional picture, we have an opportunity to learn from successes elsewhere in the country and build on the local progress we're continuing to make in these areas.

The national and regional landscape is also changing in response to these trends; national policy shifts such as the recent launch of a new Serious Violence Strategy and the findings published from the West Midlands Police and Crime Commissioner's Gangs Commission, whilst providing a helpful steer on priorities and approaches, means we move into 2019-2020 with a strengthened need to align these various approaches; improved coordination and the avoidance of duplication will therefore be a key focus of our planning into the coming year.



**Mark Taylor**  
**Chair**  
City of Wolverhampton  
Council



**Chief Superintendent Jayne Meir**  
**Vice Chair**  
Safer Wolverhampton  
Partnership



**Councillor Paul Sweet**  
City of Wolverhampton  
Council



**Councillor Hazel Malcolm**  
City of Wolverhampton  
Council

## The Safer Wolverhampton Partnership

SWP is a statutory body formed under the 1998 Crime and Disorder Act, which also operates as the city's Local Police and Crime Board. Membership consists of a range of statutory and non-statutory partners who provide cross sector representation from a range of agencies who come together to tackle crime and community safety issues across the city. It does not replace the work of the Police or the day-to-day business of the other participating agencies, but is widely considered as the most effective approach to finding joint solutions to local issues. The SWP receives an annual funding stream from the Office of the Police & Crime Commissioner (OPCC) to commission projects, interventions and posts to deliver strategic crime and community safety priorities across Wolverhampton. The main focus remains on collaborative working and influencing mainstream services. Membership is made up of a range of statutory, third sector, business sector and resident representatives.

SWP Board meets quarterly, not only to fulfil its statutory duties as set out in legislation, but also to agree plans and strategies to tackle crime and community safety issues across the city's neighbourhoods. It oversees a delivery structure formed to lead on meeting specific objectives in line with the overarching strategic priorities. The Community Safety and Harm Reduction Strategy 2017-20 details delivery against these, which are: reducing reoffending, violence prevention and reducing victimisation. The partnership also works to address local issues which are reflected in the Local Police and Crime Plan, strengthening links to the city's Safeguarding Boards and other strategic forums.

## How we commission

SWP continues to receive a grant from the Police & Crime Commissioner (PCC). The grant is used to commission specific services to aid delivery against strategic priorities. Appendix (A) shows a breakdown of expenditure and allocation for the financial year.

Services commissioned meet identified needs within the Community Safety and Harm Reduction Strategy; SWP commission with statutory and third sector organisations which are able to provide the specialist services required. The budget allocation from the PCC has been granted annually which has limited commissioning to annual contracts providing challenges for longer term contracting and planning. From 2018 onwards, the PCC will fund certain services directly. This will drive efficiencies and provide opportunities for larger scale commissioning across the West Midlands to ensure value for money.

# Community Safety and Harm Reduction Strategy 2017-2020

The Community Safety and Harm Reduction Strategy 2017-2020 details the priorities for the city. These allow for a flexible approach to be taken in response to emerging trends across the City over the life of the strategy. Delivery priorities are set for each year, informed by SWP's annual strategic assessment.

## STRATEGIC PRIORITIES

## YEAR ONE DELIVERY

<b>Reducing Reoffending</b>	<ul style="list-style-type: none"> <li>• Develop a reducing reoffending strategy</li> <li>• Reduce overall reoffending rate in Wolverhampton</li> <li>• Strengthen offender management pathways</li> </ul>	<ul style="list-style-type: none"> <li>• Tackle substance misuse amongst those within the criminal justice system</li> <li>• Support young people at risk of offending at an early stage</li> </ul>	<ul style="list-style-type: none"> <li>• Delivery of the Health and Justice Pathways Pilot for Wolverhampton</li> </ul>
<b>Reducing Victimisation</b>	<ul style="list-style-type: none"> <li>• Tackle cultural acceptance of domestic abuse and vulnerability</li> <li>• Build confidence to increase hate crime reporting</li> <li>• Strengthen cohesion to increase tolerance</li> </ul>	<ul style="list-style-type: none"> <li>• Increase understanding of modern slavery (MS) and build confidence of victims to report issues and access support</li> <li>• Increase regional inter-agency work to disrupt organised crime linked to MS</li> </ul>	<ul style="list-style-type: none"> <li>• Improve confidence and reduce the impact and prevalence of business crime</li> <li>• Enable communities to deliver solutions to local concerns</li> </ul>
<b>Violence Prevention</b>	<ul style="list-style-type: none"> <li>• Reduce violent crimes committed &amp; increase confidence of victims to report offences</li> <li>• Develop interventions to deter young people from committing violent acts</li> </ul>	<ul style="list-style-type: none"> <li>• Provide early intervention to deter young people from joining gangs</li> <li>• Provide mediation services to reduce tensions caused by violent conflict</li> <li>• Apply tools and legislative powers to effectively manage offenders</li> </ul>	<ul style="list-style-type: none"> <li>• Reduce the harm caused to victims of Violence Against Women and Girls (VAWG)</li> <li>• Deliver targeted initiatives to reduce alcohol related violence</li> </ul>
<b>Statutory Functions</b>	<ul style="list-style-type: none"> <li>• Improvement engagement and provide a platform for residents to raise concerns</li> </ul>	<ul style="list-style-type: none"> <li>• Complete Domestic Homicide Reviews in order to identify learning for agencies to improve practice and prevent further deaths</li> </ul>	<ul style="list-style-type: none"> <li>• Deliver Wolverhampton's response to the Prevent duty</li> <li>• Deliver initiatives to strengthen community cohesion across the city</li> </ul>

# Reducing Reoffending

## Snapshot of Performance

13.6% increase in Total Recorded Crime (2541 offences). One of the lowest increases in the West Midlands area

Wolverhampton was ranked the 2nd best performing city in the West Midlands

Wolverhampton accounted for 9.2% of the total recorded crime in the West Midlands (9.1% in 2016-2017)

Robbery increased by 35 offences (9%). However, offences with an offender aged 10-24yrs reduced by 40%.

## Black Country Reducing Reoffending Strategy

Geographical boundaries of both the National Probation Service (NPS) and Community Rehabilitation Company (CRC) have grown to include the wider Black Country area, plus added pressures around increasing numbers of cohorts requiring supervision have resulted in the need to restructure.


A Black Country Strategic Group has been developed to reduce the number of local meetings and to allow the Black Country areas to share best practice and work collaboratively to reduce reoffending. Work has begun on a Black Country Reducing Reoffending Strategy which will complement and align with the Black Country Strategic Group. SWP are leading on this work in close collaboration with the other Black Country CSPs. Local action plans will be developed to retain appropriate responses and any local variations

### Black Country Strategic Group membership:

- Wolverhampton, Walsall, Dudley and Sandwell Community Safety Partnerships (CSPs)
- Community Rehabilitation Company (CRC)
- Black Country Court Representative
- West Midlands Police
- National Probation Service (NPS)
- Youth Offending Teams

## Substance Misuse

Recovery Near You were recommissioned during 2017 to provide the City's substance misuse service, ready for the new service to begin 1 April 2018.

 Number of criminal justice clients in treatment remains **in line with regional average**

 Assessment waiting time reduced from **3 weeks** to **7 days**

 **Dedicated court worker** attending court every day

**15%** of criminal justice clients representing **within 6 months** (lower level than regional average)

## Youth Offending Team (YOT)

During 2017-2018, the YOT continued to utilise part of the PCC grant to part fund staffing to deliver bespoke Community Resolution Workshops for young people.

Young people apprehended by the police for low level offending who are on the cusp of entering the Youth Justice system are offered a brief assessment and intervention workshop which is designed to divert them from further offending and signpost them to appropriate services required.

The variety of interventions available included workshops relating to:

 Responsible use of Social Media	 Crime and consequences	 Signposting for further support/resources	 Victim awareness
Gangs and youth violence 	Substance misuse and health issues 	 <b>connexions</b> <small>The best start in life for every young person</small> Connexions advice	Mental Health Liaison and Diversion 

For 2019-2020 the offer will be extended to include ONSET assessment and individual support plans for those young people identified at greater risk. These can address a young person's propensity for further offending and any safety/wellbeing concerns. Achievements during 2017-2018 include:

**145 young people**  
who received Community Resolutions or Out of Court Disposals engaged in YOT interventions

**175 young people**  
took part in Community Resolution Workshops at The Way Youth Zone

**70 ONSET and ASSTPLUS**  
assessments undertaken on pre-court young people

## YOT Case Study

A young person attended the Community Resolution Workshop at The Way Youth Zone for Assault Occasioning Actual Bodily Harm. She completed four short sessions on Victim Awareness, Crimes and Consequences, Social Media/Sexting and Youth Violence (Catch 22). She engaged in ten sessions of a three-month voluntary offending behaviour intervention.

Successes included:

- No further reports of offending behaviour in the community
- Positive change in her behaviour at home, with a reduction in her aggressive outbursts
- Now on a full-timetable with a school mentor
- On target to achieve desired National Curriculum Grades
- Support with her mental health
- Positive feedback received – she said that work had been ‘good’ and that ‘I am a lot happier than I was before’.

# Reducing Victimization

## Snapshot of Performance

<p>The Violence Against Women and Girls (VAWG) strategy in Wolverhampton has seen success across 9 of the 12 performance measures</p>	<p>Domestic Abuse showed an increase of 220 incidents with a 5% increase in recordable offences*</p>	<p>Reports of female Genital Mutilation increased by 59%, up by 10 reported incidents*</p>
<p>Serious Sexual Offences increased by 80 offences (15%)*</p>	<p>Business crime had a 698-offence increase (16.4%)</p>	<p>Modern Slavery increased from 8 offences last year to 32 offences during 2017-2018*</p>

## Business Crime

SWP contributed to a combined funding pot which enabled Wolverhampton Business Crime Reduction Group (WvBCRG) to continue their work to reduce business crime in the City. WvBCRG work with owners of small and medium enterprises (SMEs) to raise awareness and build resilience, helping them to protect themselves from becoming victims of crime. WvBCRG have built solid partnerships with West Midlands Fire Service (WMFS) and West Midlands Police (WMP) to deliver business crime reviews to help local businesses keep their properties safe and secure.

<p> <b>14 Business Crime Reviews</b> – At locations where crime has taken place.</p>	<p> Work with businesses to build understanding of how business crime can affect their company</p>
<p><b>40 Cyber Crime awareness sessions</b>  - strengthening online security</p>	<p>The development of 21 Business Watch Groups with 742 businesses across the City of Wolverhampton </p>
<p> Target hardening visits and fire safety inspections in partnership with West Midlands Fire Service</p>	<p> Increasing communication between local businesses, the Police and other statutory organisations.</p>

\* An increase in traditionally hidden crimes reflects improved confidence in reporting



## Violence against Women and Girls (VAWG)

The 2016-2019 multi-agency VAWG strategy is providing clear direction to the City's approach to driving forward important improvements in tackling the five strands of VAWG: domestic abuse, sexual violence, female genital mutilation (FGM), so called honour-based violence (HBV) and forced marriage. The following key achievements have been realised:

### Coordination

- The Coordinator is an active participant in the regional Preventing Violence Against Vulnerable People arrangements that support standardised good practice across the region
- Terms of reference, membership, and frequency of meetings for the WDVF Executive Board have been refreshed to drive delivery of the action plans.

### Campaigns

- A successful Orange the World Campaign to raise awareness of VAWG involving over 100 organisations
- Successful community health event at West Park School facilitating community discussion and awareness raising of VAWG subjects
- Leaflets and community resources in different languages distributed to residents through community champions
- Successful delivery of eight VAWG awareness raising sessions at the Refugee and Migrant Centre, directly engaging with newly emerging communities

### MARAC

- 651 high-risk cases were discussed at the multi-agency risk assessment conference (MARAC) in 2017-18
- The work of the Independent Domestic Violence Advisers (IDVA) has seen a reduction in repeat cases at MARAC
- 36% repeat cases, with 252 children associated with these families
- Early non-Police referrals increased to 37% towards the target of 40% (from 25% in 2015-16 and 31% in 2016-2017)

### Training

- WDVF training plan has been refreshed and expanded to encompass hidden crimes including 'so called' honour-based violence, forced marriage, and FGM.
- Provided to organisations across the City to improve understanding, capacity and skills of frontline managers
- Development of a new rape and sexual violence training session, to date it has been delivered to 33 professionals



## VAWG Service Transformation Fund

The Home Office launched its VAWG Transformation Fund in December 2016 with an aim to aid, promote and embed the best local practice and ensure that early intervention and prevention became the norm. Confirmation was received in July 2017 that Wolverhampton's submission had been successful. An allocation of £500K was awarded to cover the three-year period 2017-2020. The allocation will aid implementation of the 2016-19 VAWG action plan by addressing identified unmet need within the City, whilst building on the positive work already undertaken to integrate an improved response to VAWG through mainstream delivery and to build sustainable change over the long term. The Key Work Strands are:

### Behaviour change and accountability

- Provision of a community-based perpetrator programme catering for standard risk
- Programme accepts self, early help and third-party referrals
- Provision of a Criminal Justice IDVA to increase positive outcomes in court

#### Early achievements:

- Domestic violence perpetrator programme commenced
- Criminal justice IDVA appointed

### GP Training and Support

- Providing education, training and support to GPs and clinical staff
- Strengthens reporting and care pathways, builds capacity and increases understanding of reporting requirements with GPs so they understand and deliver their safeguarding responsibilities

#### Early achievements:

- Training commenced February 2018
- Drop-in provision commenced 1 March 2018

### Safer Homes Scheme

- City-wide model for identifying and supporting victims of abuse to remain safely in their homes
- Includes risk assessments of victims' properties and completion of enhanced safety measures

#### Early achievements:

- Protocol established
- Vulnerability assessments commenced

### Building Sustainable Change

- Working with partners to embed early intervention work  
Independent evaluation will be undertaken by Wolverhampton University
- Effective evaluation of impact, identification of efficiencies for integration into mainstream services such as Strengthening Families Hubs, Social Care, MASH and schools

#### Early achievements:

- Evaluation framework agreed



# Violence Prevention

## Snapshot of performance

Public Place Violence with Injury increased by 70 offences. Ranked 4th of 15 areas within its most similar grouping

Gun crime increased by 73% from 37 offences to 64 offences in 2017 - 2018

There were 28 Personal Robbery where the the victim is 10-24yrs – this is a 40.4% reduction from (2017 – 2018)

Violent crimes with a knife or bladed weapon rose by 30 offences (16.5%) - 4th lowest increase across the West Midlands

## Preventing Gang Involvement and Youth Violence

Delivery against the Preventing Gang Involvement and Youth Violence Strategy 2016-2019 has continued with a strong focus on providing early intervention and prevention activities to those either at risk of gang involvement or to young people who are already affiliated with gangs or involved in youth violence.

The Gangs Steering Group continued to grow its membership during 2017-2018. Strong partnerships have formed with Early Help and Social Care, who are now working closely with the police and SWP to identify young people of concern so that interventions are targeted at those most in need of support. In line with other West Midlands areas and the national picture, 2017-2018 presented fresh challenges around youth violence and gang related violence. In response, specialist partner agencies have been commissioned to deliver services in specifically identified locations associated with gang activity and youth violence.

During 2017-2018 the 4<sup>th</sup> knife bin in Wolverhampton was opened in Graisle. This was funded and officially opened by the Police and Crime Commissioner David Jamieson. The knife bin allows young people to dispose of any weapons they may be carrying without fear of repercussions.

## Critical Call out Mediation Service

The Community Reference Group (CRG) was re-commissioned to provide the critical call out mediation service in 2017-2018. The service, which is deployed in response to escalating gang and youth violence tensions provides support to individuals who have been directly involved as well as the wider family and community; this has proved to be invaluable in providing community reassurance and reducing the risk of further incidents, including retaliations. The local knowledge they have along with the trust of the community means that they are best placed to deliver the service effectively and respond promptly as soon as they are deployed.

### School Mentoring Programme

- Aimed at year 5 & 6 children and rolled out in 24 targeted primary schools in Whitmore Reans and Graiseley
- Programme commenced in 14 schools
- Trains young people to become mentors with the aim of building resilience and confidence, teaching avoidance techniques and educating children about the dangers of gangs and peer pressure. Self-sustaining as mentors will train the next cohort of children.
- A complementary programme is being rolled out to teaching staff to educate them about signs of gang behaviour and risk indicators

### Preventing Violence Project

- 10-week intervention with known gang members
- Engaged the community and families and enabled direct support and interventions where it could be most effective
- Aims to reduce tension and keep families and the community safe

### Family Intervention Project

- Delivered by the CRG in partnership with Wolverhampton Police
- Delivery has commenced
- As trusted community figures the CRG, engage with young people and their families as identified by Early Help
- Start conversations around the family's vulnerabilities, building a trusted relationship with the wider family
- Ongoing support needs are referred to Early Help who can engage the whole family.

### Girls Allowed Project

- Funded by Comic Relief and aimed at young females who are associated with or vulnerable to gang involvement
- Delivered by a consortium of third sector partners offering a range of complementary interventions
- peer mentoring, outreach, group sessions, healthy relationships, sports/drama programmes and work with families.

# Statutory Functions

Prevent referrals have increased from 49 to 55 this year, a 12% rise in reports\*


Hate Crime increased its base line from 374 to 385 offences (3%). Most crimes were race related (336 out of 384 or 87.5%)\*

Increased social media presence – 217 Twitter and 134 Facebook followers


20 third- party reporting centres in the City, where residents can report a hate crime without going to the police

## Methods of Engagement


Following feedback during 2016-2017, the SWP now has a greater social media presence. This has led to more followers and the ability to communicate with a broader range of residents. Residents are also represented on the SWP Board by resident representatives (one for each constituency area). They are able to feedback important issues from Partners and Communities Together (PACT) meetings and allow for greater resident engagement.



**Partners and Communities Together (PACT) meetings** – held at varying times and locations



Increased social media presence – **217 Twitter** and **134 Facebook followers**



**Mail correspondence** to residents


Regularly updated **SWP website**



Regular **questionnaires & surveys** seeking residents' views



Resident representatives on the SWP board



\* An increase in traditionally hidden crimes reflects improved confidence in reporting



## Domestic Homicide Reviews (DHRs)

Undertaking Domestic Homicide Reviews (DHRs) continues to be a statutory obligation delivered by SWP. A DHR is completed when a death meets specified criteria set by the Home Office; the aim of the review is to identify learning for agencies to improve practice and prevent future deaths.

During 2017-2018 SWP received two notifications of domestic violence related deaths in Wolverhampton that could meet the criteria for undertaking a DHR; neither were undertaken as a full DHR. One had no agency contact with Wolverhampton and therefore there was deemed to be no possible learning; this decision was supported by the Home Office. The other case was reviewed in Birmingham as the victim resided there

Learning from DHRs continues to be included in our training offer and there are proposals to host a joint DHR, Serious Case Review and Adult Safeguarding Review learning event for practitioners during the summer.

## Prevent and Cohesion

Delivery of Wolverhampton's response to the Prevent Duty is both a statutory and priority area for the partnership. Wolverhampton continues to be considered a low-risk (tier 3) area, and as such does not receive Home Office funding. Despite this, SWP continues to promote Workshops to Raise Awareness of Prevent (WRAP) training within the city, utilising its bank of trainers.

Additional activity during 2017-2018 includes:

- Attendance at the West Midlands Police Force Hate Crime and Prevent Boards, as well as the Regional Prevent Forum which allows sharing of best practice and the ability to work collaboratively on regional projects
- SWP presence at the Council's equalities events group, planning engagement activities to increase community cohesion
- SWP representation at Wolverhampton LGBT Alliance
- Hate crime stand at Wolverhampton Pride 2017



2017-2018 has seen significant engagement with the **health** and **housing** sectors



100% of schools have received **WRAP training**

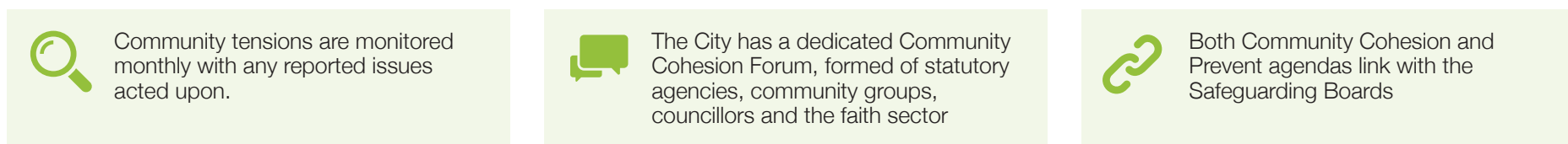


**PREVENT e-learning** has been made compulsory for all council employees

Channel Panel and Contest Board are well attended by partner agencies.  
 Contest is organised around four principle work streams, which remain as:



Wolverhampton prides itself on being a cohesive community. The city has not seen protests by extremist groups in the same way that neighbouring authorities have, in part due to Wolverhampton’s record of celebrating the city’s diversity, and not giving extremist groups an inlet for protest. Where specific issues do occur, SWP provides a coordinated response utilising the combined resources of multiple agencies. SWP has a robust approach to monitoring community tensions across the city:





## Faith Covenant

SWP worked with statutory partners, alongside the third and faith sectors to develop a Faith Covenant for Wolverhampton. The Covenant, an initiative created by the All Party Parliamentary Group on Faith and Society, reinforces the city's commitment by local authorities, partners and the faith sector to cooperate on issues across the city.

The Covenant in Wolverhampton will act as a vehicle for further engagement work with the faith sector in the city and will form a key part of the city's community cohesion work going forward. It will also form the core of a faith forum in Wolverhampton, with direct liaison between the statutory and faith sectors.



**15 organisations** have signed up to the Wolverhampton Faith Covenant launched 12 December 2017



## Moving forward 2018-2019

The partnership will face new challenges over the next 12 months. The grant issued by the PCC has been reduced for the third year running, resulting in an increase in a streamlined programme of commissioning to meet SWP strategic priorities. The PCC has announced that the way that funding is distributed, and services commissioned will significantly change.

From 2020 the Police and Crime Commissioner and West Midlands Mayor's offices will combine, the information available is currently limited, however it causes more uncertainty for CSPs from 2020 onwards. It has been confirmed that some services, including funding for DHRs and YOTs, will be funded directly by the Office of the Police and Crime Commissioner. It is anticipated that moving forward more services and programmes will be commissioned directly by the PCC's office.



**STRATEGIC PRIORITIES**

**Reducing Reoffending**

- Engage with identified communities to break the cycle of cultural acceptance of domestic related abuse and vulnerability

**YEAR 2 DELIVERY**

- Build confidence within communities subjected to hate crime to increase reporting and strengthen cohesion
- Working with partners, strengthen and integrate the collective response to DA

- Increase understanding of modern slavery and build confidence of victims to report issues/access support
- Targeted engagement to reduce the risk of business victimisation

**Reducing Victimisation**

- Develop interventions to deter young people from committing violent acts & carrying bladed weapons
- Provide critical call out mediation services to reduce tensions and escalations of violence

- Apply available legislative tools and powers to increase the effective management of offenders

- Deliver a risk-based model of DA perpetrator programmes inside and outside of the criminal justice system

**Violence Prevention**

- Implement a Black Country wide Reducing Reoffending strategy
- Improve recovery rates for offenders & those at risk of substance misuse problems
- Improve city image and business confidence by tackling aggressive begging and rough sleeping

- Address drug dealing amongst individuals, with a particular focus on New Psychoactive Substances
- Identify young people at risk of offending at an early stage and provide interventions

- Reduce volume crime with focus on vehicle crime, burglary, shoplifting and DA
- Proactively utilise additional resource committed to strengthen the gangs and youth violence offer and delivery

**Statutory Functions**

- Improvement engagement and provide a platform for residents to raise concerns

- Complete Domestic Homicide Reviews in order to identify learning for agencies to improve practice and prevent further deaths

- Deliver Wolverhampton's response to the Prevent duty
- Deliver initiatives to strengthen community cohesion across the city

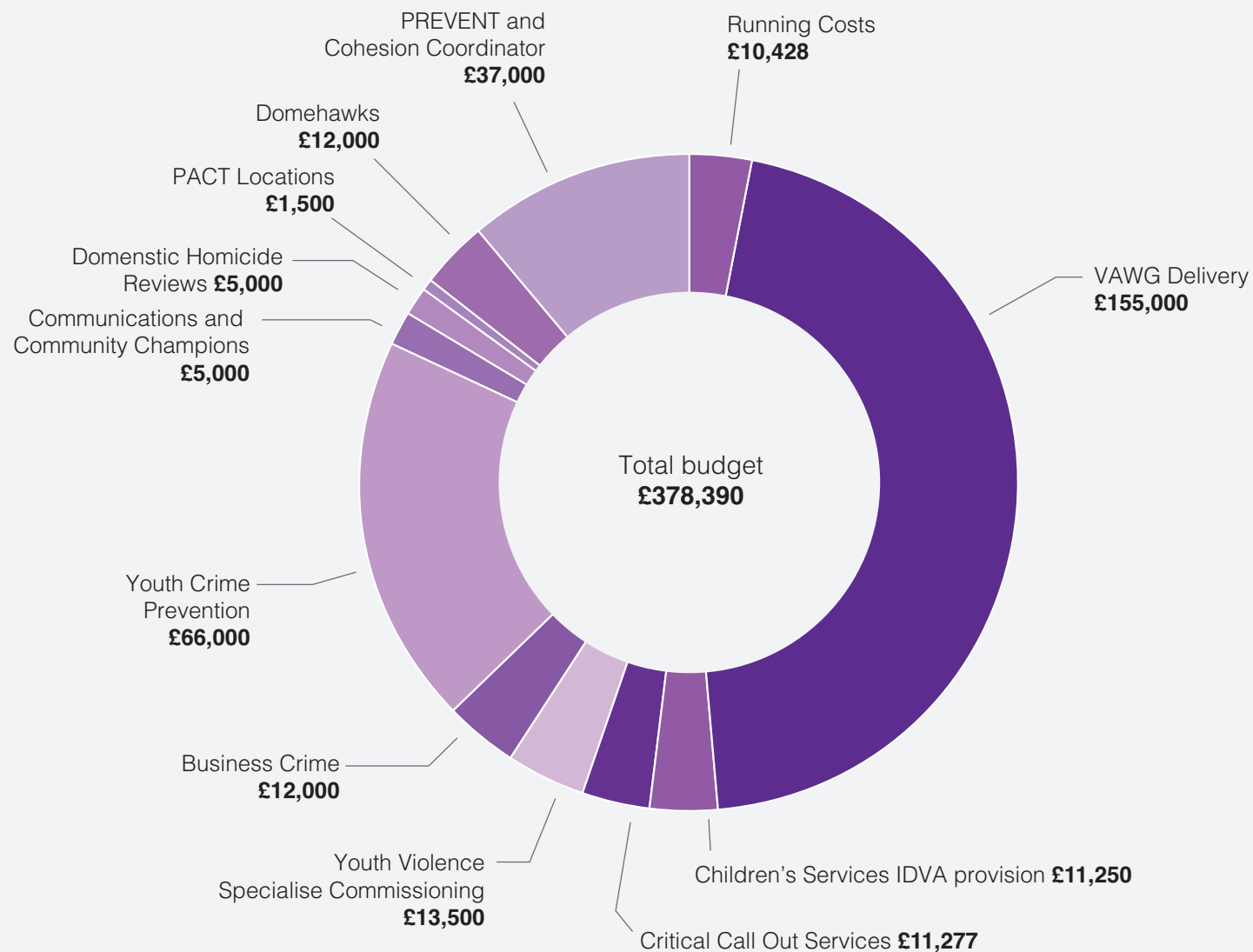
## Glossary of Terms

<b>CRC</b>	Community Rehabilitation Company	<b>NPS</b>	National Probation Service
<b>CRG</b>	Community Reference Group	<b>OPCC</b>	Office of the Police and Crime Commissioner
<b>CSP</b>	Community Safety Partnership	<b>PACT</b>	Partners and Communities Together
<b>DIP</b>	Drug Intervention Programme	<b>PCC</b>	Police and Crime Commissioner
<b>DHR</b>	Domestic Homicide Review	<b>SARC</b>	Sexual Assault Referral Centre
<b>FGM</b>	Female Genital Mutilation	<b>SWP</b>	Safer Wolverhampton Partnership
<b>GODOC</b>	Gangs One Day One Conversation	<b>VAWG</b>	Violence Against Women and Girls
<b>HBV</b>	Honour Based Violence	<b>WMFS</b>	West Midlands Fire Service
<b>IDVA</b>	Independent Domestic Violence Advisor	<b>WMP</b>	West Midlands Police
<b>MAPPA</b>	Multi Agency Public Protection Arrangements	<b>WRAP</b>	Workshop to Raise Awareness of PREVENT
<b>MARAC</b>	Multi Agency Risk Assessment Conference	<b>WVBCRG</b>	Wolverhampton Business Crime Reduction Group
<b>MASH</b>	Multi Agency Safeguarding Hub	<b>WDVF</b>	Wolverhampton Domestic Violence Forum
<b>MS</b>	Modern Slavery	<b>YOT</b>	Youth Offending Team



## Appendix A: Budget Allocation 2018-2019

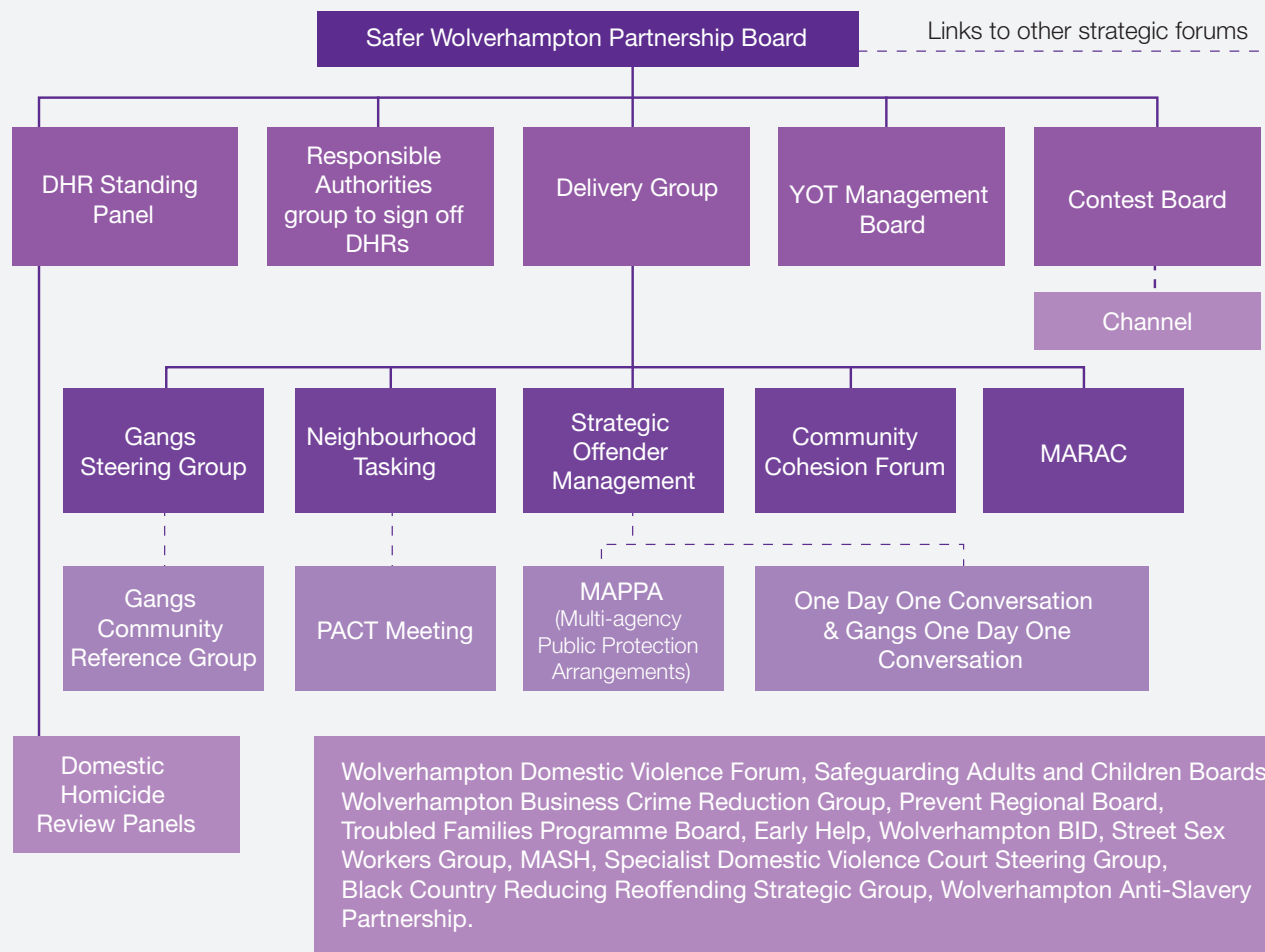
The total income allocated from PCC was £339,995. This, along with an agreed carry forward of £38,435, amounted to a budget of £378,390.



## Appendix B: SWP Board Membership & Delivery Structure Chart

### SWP Board membership:

- Business sector
- City of Wolverhampton Council
- Clinical Commissioning Group
- Community Rehabilitation Company
- Constituency based resident representatives
- Her Majesty's Prison Service
- National Probation Service
- Third Sector-including resident representatives/special interest representatives: (Rakegate Resident's Association; Wolverhampton Domestic Violence Forum, P3, Victim Support and St George's Hub)
- West Midlands Fire Service
- West Midlands Police
- Youth Police & Crime Commissioners



## Appendix C: Performance Report 2017-2018

### Reducing Reoffending

KPI and preferred direction of outcome		Quarter 1		Quarter 2		Quarter 3		Quarter 4		Commentary	Trend	Data Owner
		2016/17	2017/18	2016/17	2017/18	2016/17	2017/18	2016/17	2017/18			
Proven Reoffending (youth and adult) to be below baseline Baseline 25.6%	To reduce		<b>33.2%</b> 1739 offenders of which 578 reoffended		<b>30.4%</b> 1683 offenders of which 512 reoffended		<b>30.3%</b> 1723 offenders of which 522 reoffended			MOJ website does not have an update for Q4		WMP Analyst
Reducing first time entrants to the youth justice system Baseline 131	To reduce	<b>30</b>	<b>32</b>	<b>25</b>	<b>28</b>	<b>41</b>	<b>35</b>	<b>35</b>	<b>26</b>	During Q4 17/18 Wolverhampton YOT recorded 26 First Time Entrants (FTE); lowest levels for 17/18 and a reduction on the levels compared to Q4 16/17. All FTE were aged between 10 & 17, with 50% aged 15 & 16 years. Out of Court disposals accounted for 73% of all outcomes, with 19% relating to referral orders as a first-tier outcome. A Conditional Discharge & a fine were the other outcomes recorded.		YOT
Reducing youth custody numbers - % of court disposals Baseline 9.9%	To reduce	<b>16.33%</b> (8/49)	<b>3.84%</b> (2/52)	<b>26.31%</b> (10/38)	<b>7.54%</b> (4/53)	<b>11.9%</b> (5/42)	<b>12%</b> (6/50)	<b>6.98%</b> (3/43)	<b>15.2%</b> (7/46)	7 young offenders received a custodial sentence during Q4 17/18; an increase on the previous quarter. 17/18 has seen custodial sentences increase each quarter. One female received a custodial sentence. All young offenders were aged between 15 & 17 years.		YOT

## Substance Misuse

KPI and preferred direction of outcome	Quarter 1		Quarter 2		Quarter 3		Quarter 4		Commentary	Trend	Data Owner
	2016/17	2017/18	2016/17	2017/18	2016/17	2017/18	2016/17	2017/18			
DIP % of positive drug (opiate & non-opiate) tests at WV Baseline 63%	To decrease	62.1%	69.1%	66.7%	66.6%	70.0%	69.2%	54.5%	This data is not available for Q4		SWP Analyst
KPI	Output for Jan 2018-Wolverhampton	Output for Jan 2018-West Midlands	Commentary					Trend	Data Owner		
Criminal Justice clients in treatment and as a % of the total treatment population	Opiate 237 (24%) Other drugs & alcohol 28 (4%)	Opiate 2899 (29%) Other drugs & alcohol 864 (12%)	The amount of criminal justice clients in treatment remains in line with regional levels.						Public Health		
Number (and as a % of total) of successful completions by Criminal Justice Clients	Opiate 13 (5%) Other drugs & alcohol <5 (4%)	Opiate 133 (5%) Other drugs & alcohol 366 (42%)	Custody assessments are initiated by the Police in terms of an initial drug test where a trigger offence has been committed and/or there is knowledge of current or previous drug use. Testing could be increased under Inspectors discretion to allow for wider screening and this is being explored. There is a dedicated court worker that attends Walsall court every day from 9-11am. The waiting time is now 7 days for a booked assessment.						Public Health		
Number and % of successful completions who then represent to treatment within 6 months of discharge (Criminal Justice clients only)	Opiate <5 (15%) Other drugs & alcohol 0 (0%)	Opiate 16 (18%) Other drugs & alcohol 6 (3%)	Custody assessments are initiated by the Police in terms of an initial drug test where a trigger offence has been committed and/or there is knowledge of current or previous drug use. Testing could be increased under Inspectors discretion to allow for wider screening and this is being explored. There is a dedicated court worker that attends Walsall court every day from 9-11am. The waiting time is now 7 days for a booked assessment.						Public Health		



## Gangs and Youth Crime

KPI and preferred direction of outcome		Quarter 1		Quarter 2		Quarter 3		Quarter 4		Commentary	Trend	Data Owner
		2016/17	2017/18	2016/17	2017/18	2016/17	2017/18	2016/17	2017/18			
Reduce the number of violent crimes committed where a knife or sharply bladed instrument was present (all ages) Baseline 191	To reduce	40	49	49	49	51	56	51	67	The indicator did not achieve its desired outcome by reducing. This indicator has a new baseline of 221 which is 30 offences more than last year, which is an increase of 16.5% at the year end.		SWP Analyst
Reduce the number of violent crimes committed with use of a firearm (all ages) Baseline 33	To reduce	8	12	9	16	11	16	5	19	The baseline has increased this year from 33 to 63 reported incidents.		SWP Analyst
Reduce Public Place Violence With Injury in Wolverhampton by 5% Baseline 1128	To reduce and be 5% lower than 2015/16	284	296	308	293	272	302	264	260	The desired outcome for this indicator has not been achieved. There has been an increase of 23 offences or 2%. Compared quarter on quarter there has been a 13.9% decrease		SWP Analyst
Reduce Public Place Violence With Injury in Wolverhampton where the victim is 10-24yrs Baseline 454	To reduce	114	120	116	119	118	133	106	94	The baseline for this year is 466, 12 offences over the baseline from last year. This is a 2.6% increase. Quarter on quarter there has been a significant decrease for Q4, 29.3%.		SWP Analyst
Reduce Public Place Violence With Injury in Wolverhampton where the offender is 10-24yrs Baseline 120	To reduce	36	18	24	8	32	14	28	27	This indicator has achieved its desired outcome with a 44% reduction which is 53 offences over the 12-month period.		SWP Analyst

## Gangs and Youth Crime continued

KPI and preferred direction of outcome		Quarter 1		Quarter 2		Quarter 3		Quarter 4		Commentary	Trend	Data Owner
		2016/17	2017/18	2016/17	2017/18	2016/17	2017/18	2016/17	2017/18			
Levels of Personal Robbery offences in Wolverhampton Baseline 343	To reduce	92	72	75	98	104	102	72	97	This indicator is 26 offences over the desired baseline, 7.6% increase. This year's baseline will be 369.		SWP Analyst
Reduce Personal Robbery in Wolverhampton where the victim is 10-24yrs Baseline 130	To reduce	37	28	30	33	33	35	30	36	Although this indicator has not achieved a reduction which is the desired outcome, there is only a 2 offence increase over the 12-month period. This is a 1.5% increase on the baseline from last year.		SWP Analyst
Reduce Personal Robbery in Wolverhampton where the offender is aged 10-24 Baseline 47	To reduce	15	13	12	7	11	5	9	3	This indicator has been achieved with 28 offences over the 12-month period which is a 40.4% reduction on last year's baseline (19).		SWP Analyst
No of active gang members, as measured at GODOC Baseline – 97	To reduce	31	40	31	37	35	31		31	These meetings are only held every 2 months and therefore do not fall into the quarterly reporting time frame. There were 31 individuals discussed at the meeting in February 2018. It should be noted that Q4 2016/17 was not reported which does not allow for accurate comparative analysis.		WMP

## Violence Against Women and Girls

KPI and preferred direction of outcome		Quarter 1		Quarter 2		Quarter 3		Quarter 4		Commentary	Trend	Data Owner
		2016/17	2017/18	2016/17	2017/18	2016/17	2017/18	2016/17	2017/18			
Domestic Abuse* reported to the Police (% that are recordable offences) Baseline 6031 (42.4%)	To increase	1495 (43.6%)	1573 (43.9%)	1543 (44.3%)	1543 (44.9%)	1522 (45.8%)	1578 (49.8)	1471 (42.4)	1557 (50.8%)	This indicator has increased in line with the desired outcome. The new baseline is 6251 which is 220 more incidents compared to last year. The % of recordable offences has also increased (47.3%)		SWP Analyst
The number of victims aged 18yrs and under of Domestic Abuse reported to the Police* Baseline 318	To increase	90	69	70	66	80	82	78	65	This indicator has not achieved an increase. The new baseline is 282 which is a reduction of 36 incidents compared to last year.		SWP Analyst
Serious Sexual Offences reported to the Police* Baseline 535	To increase	107	127	115	169	167	154	146	165	The new baseline of 615 is an 80-offence increase, desired outcome has been achieved for this indicator		SWP Analyst
The number of victims aged 18yrs and under of Serious Sexual Offences reported to the Police* Baseline 281	To increase	59	78	47	93	84	79	91	86	The baseline has increased by 55 offences. The baseline is 336 for the new year. This indicator has been achieved.		SWP Analyst
Number of Domestic Homicides		0 Domestic Homicides in Quarter 4										Community Safety

## Violence Against Women and Girls continued

KPI and preferred direction of outcome		Quarter 1		Quarter 2		Quarter 3		Quarter 4		Commentary	Trend	Data Owner
		2016/17	2017/18	2016/17	2017/18	2016/17	2017/18	2016/17	2017/18			
Number of cases taken to MARAC Baseline 40%	To increase	156	151	175	143	155	166	166	191	There was an increase in the number of MARAC referrals in Q4 compared to the previous quarter, and Q4 last year. Overall, the number of MARAC referrals over the year has remained static, with just one fewer case referred than last year. This is the first year since Wolverhampton's MARAC commenced in 2006 when the number of MARAC referrals has not shown an increase. The MARAC repeat rate has also decreased marginally which suggests that MARAC has achieved an increase in safety of our known high-risk victims. Overall, our investment in the domestic violence care pathway, has resulted in the non-Police MARAC referral rate increasing to 37% towards our target of 40%. Therefore, high risk victims are being identified and supported at an earlier stage. The number of cases involving children has decreased by -8.46% compared to last year, whilst there has been a noticeable increase in the number of referrals to MARAC from Strengthening Families and Children Social Care.		SWP Analyst
Number of repeat MARAC cases	To increase	46 (29%)	51 (34%)	58 (33%)	42 (29%)	62 (40%)	59 (36%)	59 (36%)	69 (36%)	36% repeat rate, with 252 children affected in these high risk (of serious harm/homicide) families. This indicator has reduced by 4 cases over the last 12 months in line with the indicator.		WDVF

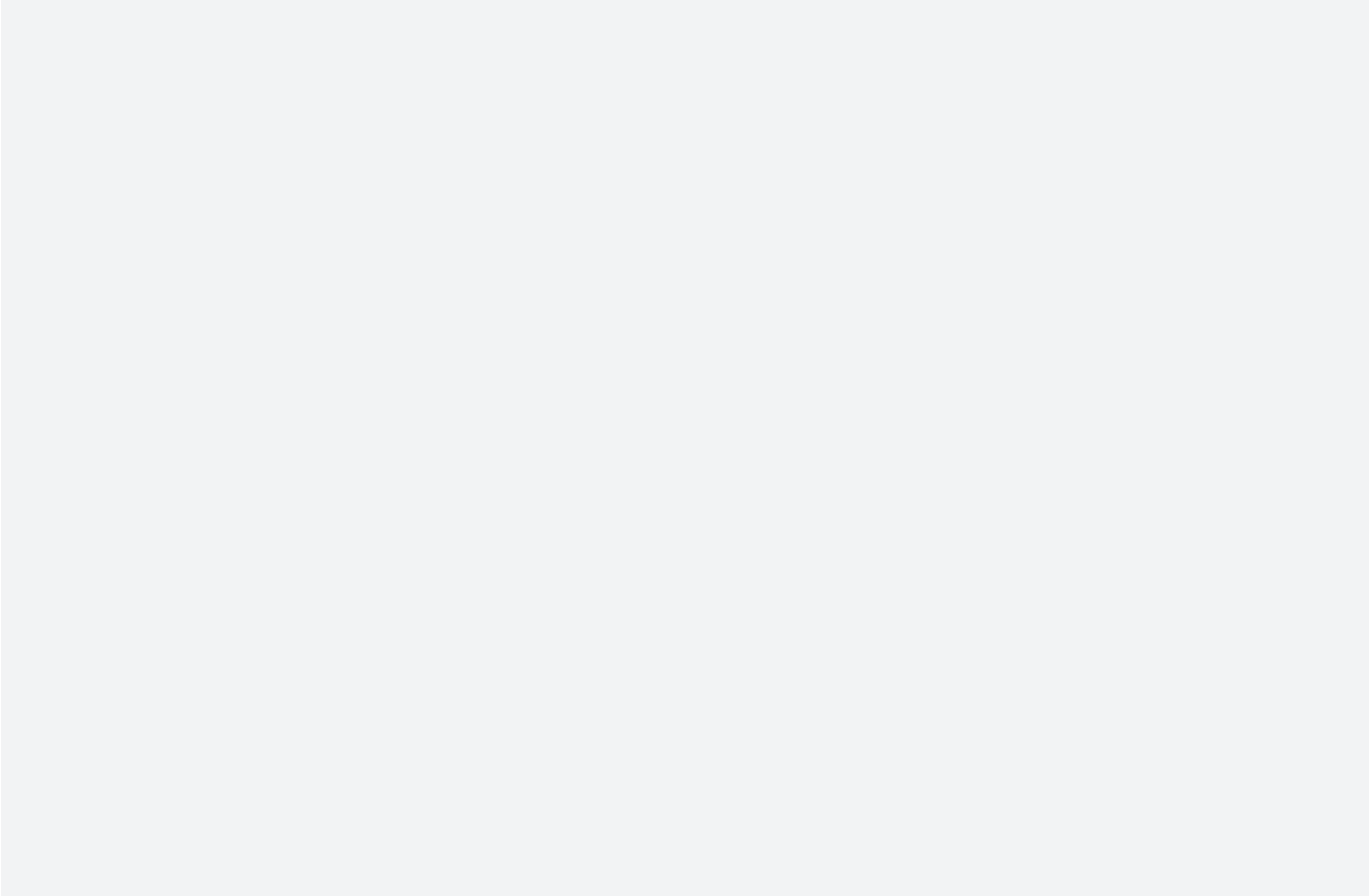


## Violence Against Women and Girls continued

KPI and preferred direction of outcome		Quarter 1		Quarter 2		Quarter 3		Quarter 4		Commentary	Trend	Data Owner
		2016/17	2017/18	2016/17	2017/18	2016/17	2017/18	2016/17	2017/18			
Number (and %) of successful outcomes for VAWG offences from court	To increase	<b>75%</b> <b>(176 cases)</b>	<b>72%</b> <b>(144 cases)</b>	<b>72%</b> <b>(141 cases)</b>	<b>79%</b> <b>(184 cases)</b>	<b>69%</b> <b>(165 cases)</b>	<b>76%</b> <b>(124 cases)</b>	<b>74%</b> <b>(181 cases)</b>	<b>76%</b> <b>(122 cases)</b>			WDVF
Number of referrals to SARC from Wolverhampton	To increase	12	10	9	5	13	16	8	16	This indicator has increased over the 12-month period compared to the previous year. Quarter 4 figures have equalled the previous quarter.		West Midlands SARC
Number of Forced Marriage incidents* recorded by the Police (% that are recordable offences) Baseline 5	To increase	<b>3</b> <b>(33%)</b>	<b>0</b> <b>(0%)</b>	<b>1</b> <b>(100%)</b>	<b>2</b> <b>(50%)</b>	<b>1</b> <b>(0%)</b>	<b>1</b> <b>(0%)</b>	<b>0</b> <b>(0%)</b>	<b>1</b> <b>(0%)</b>	There has been a reduction in this indicator over the 12-month period with the same number of recordable offences as the previous year (2). The new baseline will be 4		SWP Analyst
Number of Honour Based Abuse incidents* recorded by the Police (% that are recordable offences) Baseline 24	To increase	<b>8 (87.5%)</b>	<b>9 (100%)</b>	<b>5 (60%)</b>	<b>4 (25%)</b>	<b>3 (0%)</b>	<b>2 (100%)</b>	<b>8 (62.5%)</b>	<b>9 (44.4%)</b>	There has not been an increase in this indicator, but the baseline has been maintained with 24 offences this year. There has been an increase of 1 recordable offence over the 12-month period.		SWP Analyst
Number of Female Genital Mutilation incidents* recorded by the Police (% that are recordable offences) Baseline 17	To increase	<b>2</b> <b>(50%)</b>	<b>1</b> <b>(0%)</b>	<b>4</b> <b>(0%)</b>	<b>6</b> <b>(0%)</b>	<b>7</b> <b>(0%)</b>	<b>12</b> <b>(0%)</b>	<b>4</b> <b>(0%)</b>	<b>8</b> <b>(0%)</b>	There has been an increase of 10 reported incidents of FGM this year giving a new baseline of 27. There were no recordable offences in this 12-month period.		SWP Analyst

## Vulnerability

KPI and preferred direction of outcome		Quarter 1		Quarter 2		Quarter 3		Quarter 4		Commentary	Trend	Data Owner
		2016/17	2017/18	2016/17	2017/18	2016/17	2017/18	2016/17	2017/18			
Number of Prevent referrals received Baseline 49	To increase	13	23	11	9	15	12	10	11	There were 11 referrals in the 4th quarter. This indicator has exceeded the baseline set from last year with an increase of 6 reports over the 12-month period.		WMP CTU
Hate Crime - number of recorded crimes Baseline 374	To increase	92	118	106	104	97	78	79	85	This indicator has increased by 11 offences. The new baseline is 385. This quarter there were 79 offences which were race related, 5 were homophobic with 1 transgender.		SWP Analyst
WMFS: Number of Home Safety Checks carried out in Wolverhampton area Baseline 1833	To increase	399	384	550	419	509	419	375	542	This indicator has not increased above last year's baseline. The new baseline will be 1764 which is reduction of 69 visits compared to the previous year.		WMFS





Operating as Wolverhampton's Local Police & Crime Board